



**IDEAL WAREHOUSE
INNOVATIONS INC**

Protecting Your People

TRAILER STANDS



**SAFETY HAS A LEG
TO STAND ON.**

WHAT'S THE RISK?

When 'spotted' on landing gear, for loading and unloading, transport trailers present a critical safety risk. Stressed by the combined weight of cargo and forklifts, trailers can up-end, or landing gear can collapse, creating potentially devastating situations for workers caught within.

Trailer stability is affected by a complex relationship involving number of axles, trailer weight, landing gear placement, weight and placement of cargo, weight and position of forklift and more.

Understanding the load and stability ratings of all the different equipment in the marketplace is beyond the training of most forklift drivers, making every trip into the nose of the trailer a gamble.

THE SIMPLE IDEAL WAREHOUSE INNOVATIONS SOLUTION.

When the cab disengages from the trailer, the trailer is at risk of collapse unless a secondary support system is utilized. For strength and support, Ideal Warehouse Innovations™'s line up of portable Trailer Stands can be easily placed under a trailer's front end to help prevent mishap and tragedy.



THE SIMPLE IDEAL WAREHOUSE INNOVATIONS SOLUTION

SIMPLE, STRONG & DEPENDABLE

STRENGTH IN NUMBERS. FOUR STRONG OPTIONS.

FOR HEAVYWEIGHT & HIGH TRAFFIC DOCKS



AutoStand PLUS
Best option for a busy loading dock environment

An Ideal Warehouse Innovations Top Option
Gas shock, self-leveling system auto adjusts height
Lever system delivers back-saving ergonomics
Easy to position and adjust
Strong, stable, patented technology

FOR HEAVYWEIGHT & LOW TRAFFIC DOCKS



AutoStand
Top-of-the-line engineering

Strong Support
Engineered for heavy-duty use
Large base creates stable solution
Gas shock, self-leveling system auto-adjusts height

FOR LIGHTER WEIGHT & HIGH TRAFFIC DOCKS



TWO-POST TRAILER STAND
Two points of support

Simple Set Up
Quick & easy positioning of two load-supporting posts
Simple 'spinning' height adjustment
Enhanced stability from 2-post solution

FOR LIGHTER WEIGHT & LOW TRAFFIC DOCKS



RATCHET TOP STABILIZING JACK
Support when it's needed

Dependable & Agile
Height adjustable with easy ratchet system
Recommend 2 units per dock position (one for each side of trailer)

Ideal Warehouse Innovations Trailer Stands are a possible solution to satisfy this OSHA regulation: 1910.178(k)(3) Fixed jacks may be necessary to support a semitrailer and prevent upending during loading or unloading when the trailer is not coupled to a tractor*.

*Each situation should be professionally evaluated for relevance.

PREVENT TRAILER UP-ENDING



PREVENT LANDING GEAR COLLAPSE



PREVENT INJURY



AUTOSTAND PLUS

A HEAVYWEIGHT SOLUTION FOR HIGH TRAFFIC DOCKS

BEST OPTION FOR A BUSY LOADING DOCK ENVIRONMENT



With its broad, stable platform and ergonomic design, the AutoStand Plus is engineered to shoulder the weight and stresses of on/off loading in heavy-duty loading dock environments. AutoStand Plus can be positioned in seconds, instantly creating a stronger, more stable loading environment.

- Up to 100,000 lbs Static Load Capacity (45,359 kg)
- Large weight distributing base (17" x 18 1/2") (432 x 470 mm)
- Large, reinforced contact pad (5" x 30" x 1/4") (127 x 762 x 6 mm)
- 16" (406 mm) diameter solid rubber tires for easy handling on any surface
- Easy to position
- Gas shock, self-leveling system with lever locking mechanism
- 1-year limited warranty
- 37" (940 mm) to 48" (1219 mm) Working Range



**ERGONOMIC &
EASY TO OPERATE**



**PREVENT TRAILER
UP-ENDING**



**PREVENT LANDING
GEAR COLLAPSE**

AUTOSTAND

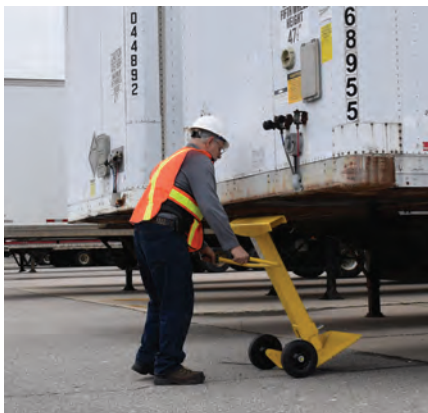
A HEAVYWEIGHT SOLUTION FOR LOW TRAFFIC DOCKS

TOP-OF-THE-LINE ENGINEERING



Engineered for strength and stability with a broad supportive platform, AutoStand can more than carry its weight in creating a safer loading dock. AutoStand helps prevent trailer up-ending and landing gear collapse with its 100,000 lbs. (45,359 kg) load capacity!

- Up to 100,000 lbs Static Load Capacity (45,359 kg)
- Large weight distributing base (17" x 18 1/2") (432 x 470 mm)
- Large trailer contact pad (5" x 30" x 1/4") (127 x 762 x 6 mm)
- 10" diameter wheels (254 mm)
- Easy to position
- Gas shock, self-leveling system with security pin
- 1-year limited warranty
- 42-1/2" (1080 mm) to 52-1/2" (1334 mm) Working Range



**SUPPORT
WHERE IT'S NEEDED**



**PREVENT
TRAILER UP-ENDING**



**PREVENT LANDING
GEAR COLLAPSE**

TWO-POST TRAILER STAND

FOR LIGHTER WEIGHT & HIGH TRAFFIC DOCKS

TWO POINTS OF SUPPORT



The Ideal Warehouse Innovations exclusive Two-Post Trailer Stand does what no single post solution can do. With twin, weight-bearing posts; one positioned on either side of the trailer, the Two-Post Trailer Stand helps eliminate BOTH trailer up-ending and trailer tip-over.

- Up to 100,000 lbs Static Load Capacity (45,359 kg) (50,000 lbs per post (22,678 kg)
- 6" diameter supporting pads (152 mm)
- 10" diameter wheels (254 mm)
- Easy to position
- Twin-Spin Levelling System
- Comes with self-contained transportation cart
- 1-year limited warranty
- 38-1/2" (978 mm) to 49-1/2" (1257 mm) Working Range



FOR MAXIMUM STABILITY



EASY TO POSITION



**TWIN-SPIN
LEVELLING SYSTEM**

RATCHET TOP STABILIZING JACK

FOR LIGHTER WEIGHT & LOW TRAFFIC DOCKS

SUPPORT WHEN IT'S NEEDED



The Ratchet Top Stabilizing Jack takes the pressure off trailer landing gear delivering added strength and support. Easily positioned, we recommend the use of two Jacks per dock position; to be used one on each side of the trailer.

- Up to 100,000 lbs Static Load Capacity (45,359 kg)
- 8" diameter support pad (203 mm)
- 8" diameter wheels (203 mm)
- Easy to position
- Recommended use: TWO jacks per dock position (one for each side of trailer)
- 1-year limited warranty
- 39-1/2" (1003 mm) to 51" (1295 mm) Working Range



TWO JACKS PROVIDE OPTIMAL STABILITY



PREVENT TRAILER UP-ENDING



PREVENT LANDING GEAR COLLAPSE



IDEAL WAREHOUSE
INNOVATIONS INC
Protecting Your People

Toll-Free Phone: 1-866-828-6737

Toll-Free Fax: 1-844-899-0088

IdealWarehouse.com

info@idealwarehouse.com

AutoStand Plus is protected by U.S. Patent No. 8016257 and Canadian Patent No. 2608682.

Two-Post Trailer Stand is Patent and Industrial Design Pending and is protected by European Community Design No. 4511715.

Form [TrailerStand-EN-HI-IW-L-201812]